

Enhancing collaboration in environmental health throughout the Pacific Northwest

Community Engagement Core (CEC)



PACIFIC NORTHWEST CENTER

— *for* —

**Translational Environmental
Health Research**



The Team



Diana Rohlman, PhD
Community Engagement Core
(CEC) Director
Oregon State University



Jackilen Shannon, PhD, MPH
CEC Deputy Director
Director - OCTRI Community
Research Hub
Oregon Health & Science
University

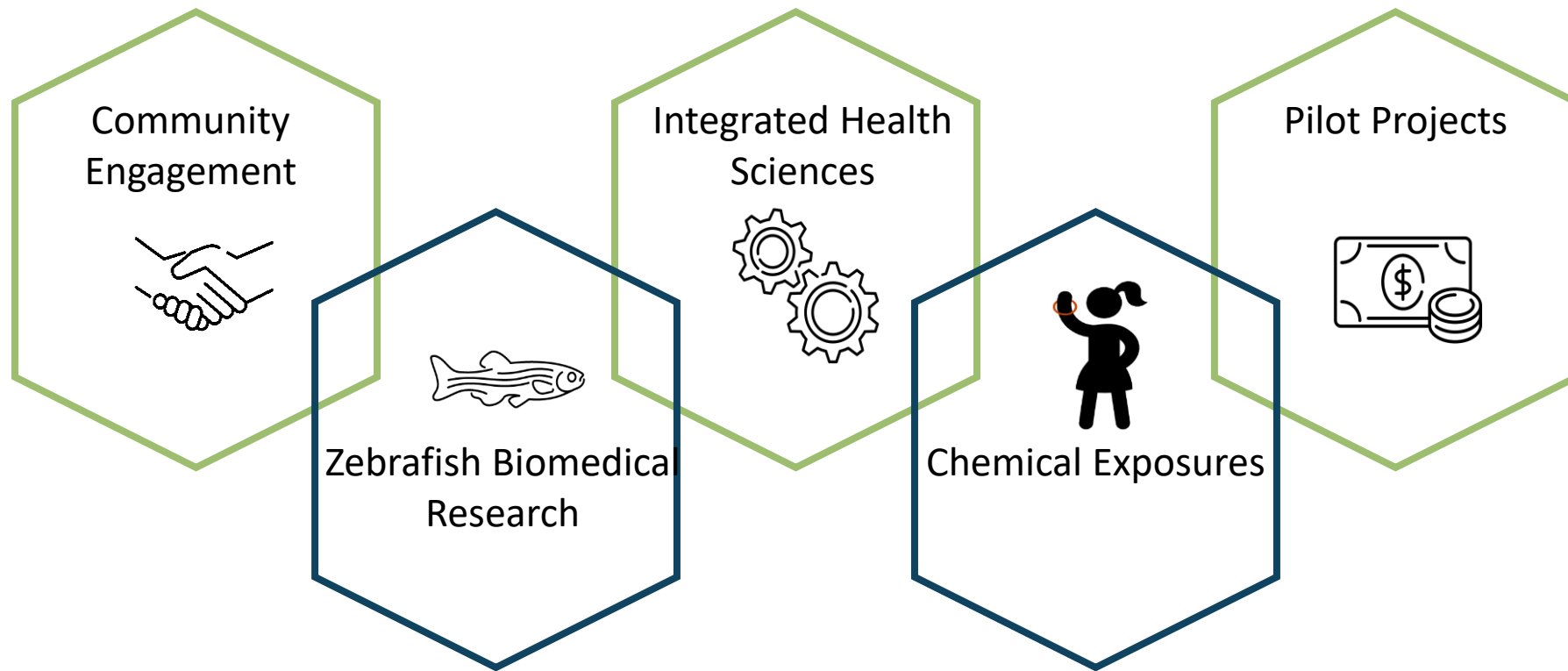


Kim Brown, MBA
CEC Program Manager
Oregon State University



Emily Ho, PhD
Integrated Health Science
Facility Director
Director – Linus Pauling
Institute
Oregon State University

The mission of the Pacific Northwest Center for Translational Environmental Health Research is to improve environmental public health and the understanding of the relationships among environmental exposures, human biology, and disease





History

Pacific Northwest Center for Translational Environmental Health Research (PNW-CTEHR or The Center)

- funded by National Institute of Environmental Health Sciences (NIEHS) in 2020
- previously known as the Environmental Health Sciences Center (EHSC)
- over 40 years of history at OSU



Defining Environmental Health

Environmental health is the science and practice of preventing human injury and illness and promoting well-being by:

- **identifying and evaluating environmental sources and hazardous agents** and
- **limiting exposures** to hazardous physical, chemical, and biological agents in air, water, soil, food, and other environmental media or settings that may adversely affect human health.



Air Quality



Water Quality



Pesticides



Toxic Waste



Wildfires

Topics of Interest



Wildfires



Pesticides



Toxic Waste

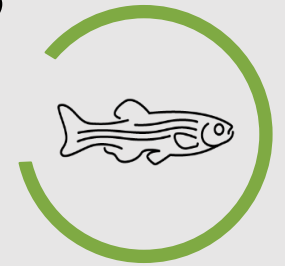


Water Quality



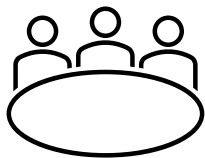
Air Quality

What We Do

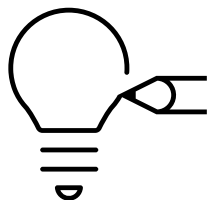




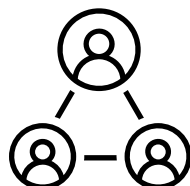
CEC Facilitates Engagement



- Enhance and expand **stakeholder engagement** across PNW.



- Represent and identify **emerging environmental health topics**.



- Contribute to a network of expertise across stakeholders to **foster collaboration** and address environmental health concerns.



- **Disseminate opportunities** (stakeholders to scientists, and from scientists to stakeholders).

Wildfire Smoke Exposure during Pregnancy

Diana Rohlman, PhD

Emily Ho, PhD

Kim Brown, MBA

Klamath County Public Health

- Jennifer Little
- Katherine Duarte



-
- Trends on Thriving Tots (TOTs) Workgroup
 - Oregon Health and Science University
 - Jackilen Shannon, PhD
 - Lynda Crocker-Daniel (OCTRI Research Liaison)



*Bootleg fire, Oregon.
~New York Times.*



What we know

- I. Klamath County – high rates of infant mortality, pre-term birth, low birthweight
- II. Large number of ‘unhealthy’ days for wildfire smoke
- III. Studies indicate an association between exposure to wildfire smoke and poor infant health measures



Q- Is pre-natal exposure to wildfire smoke is contributing to adverse infant health in Klamath County?



20

Pregnant individuals



20

Homes of Pregnant Individuals



2

In the community

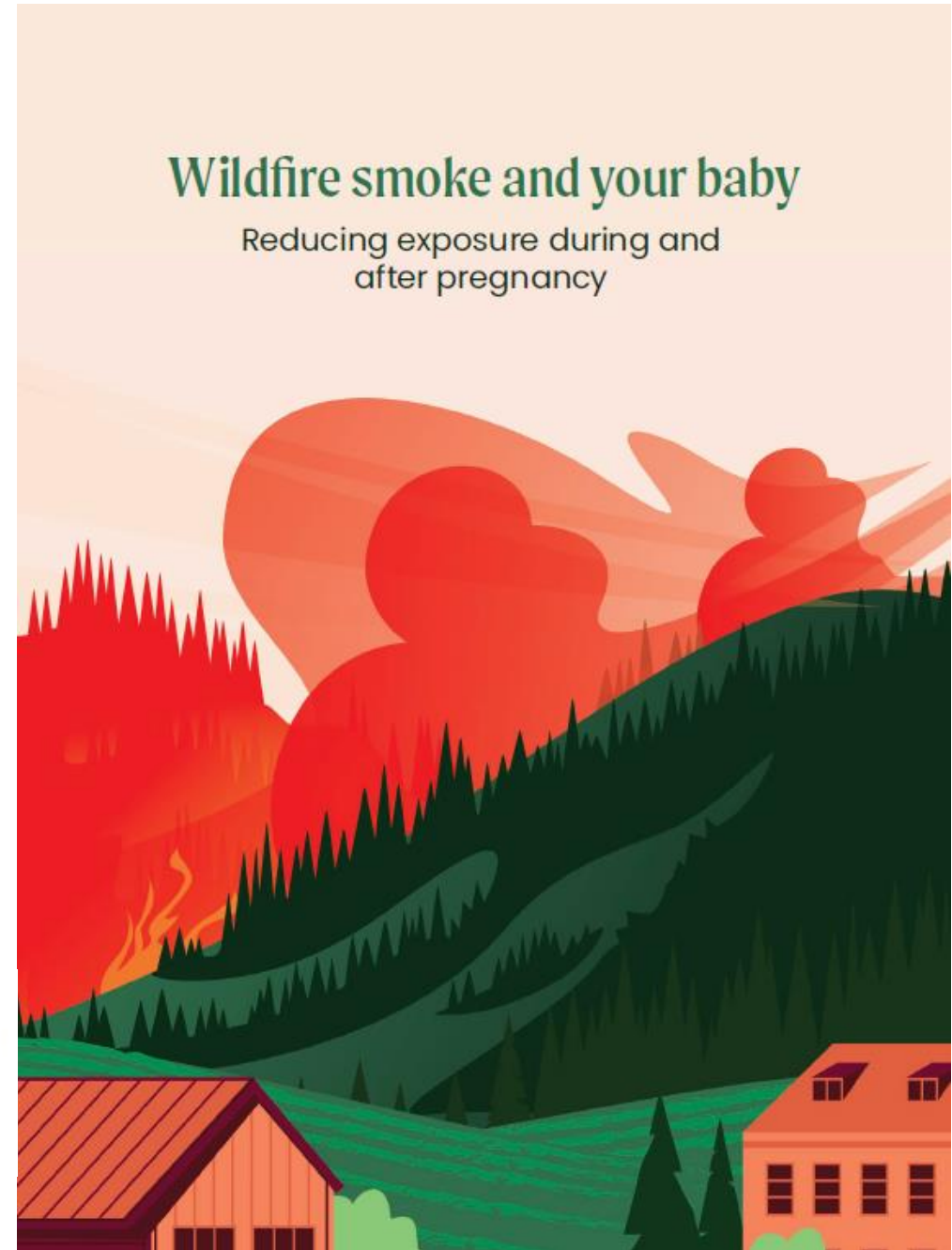
COLLECTING DATA IN 3 WAYS

- Quantify changes in prenatal exposure to wildfire smoke in ambient and indoor air before and during a wildfire.
- Characterize wildfire smoke composition and associated toxicity.



Educational Resource
being developed as
part of this Project.

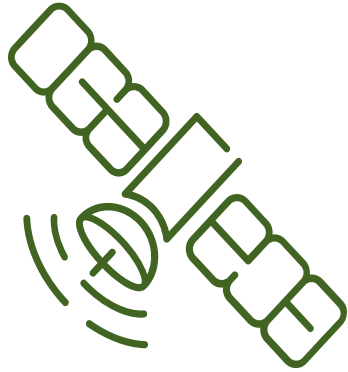
This will also be
available to share in
your communities.



THREE THEMES IN OUR SMOKE RESPONSE WORK:

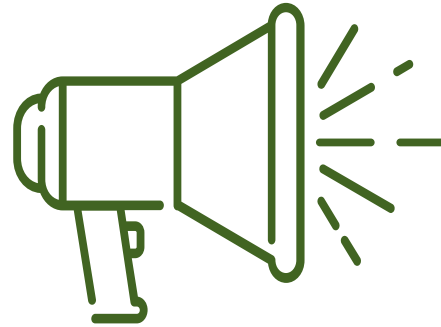
Lauren Kraemer, MPH, Associate Professor of Practice

Monitoring



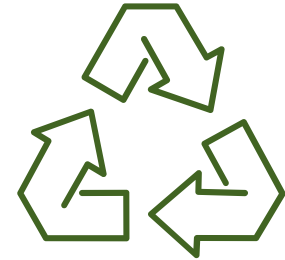
- \$10,000 OHSU Knight Cancer Foundation Grant
- 10 new smoke monitors geographically dispersed across the Gorge at orchards, middle and elementary schools
- Connected to regional air-quality website

Communication



- \$80,000 DEQ Grant
- Columbia Gorge is an SSRA
- Developing region-wide Community Response Plan for wildfire and prescribed burning smoke, partnerships with OSU and external organizations, focus groups, and mock-disaster drill focused on underserved populations

Mitigation



- \$106,000 DEQ Grant
- Alternatives to burning including chipping orchard and forest waste/slash and air curtain incinerators
- Orchard waste has been sprayed with legacy chemicals, mitigation strategies are critical



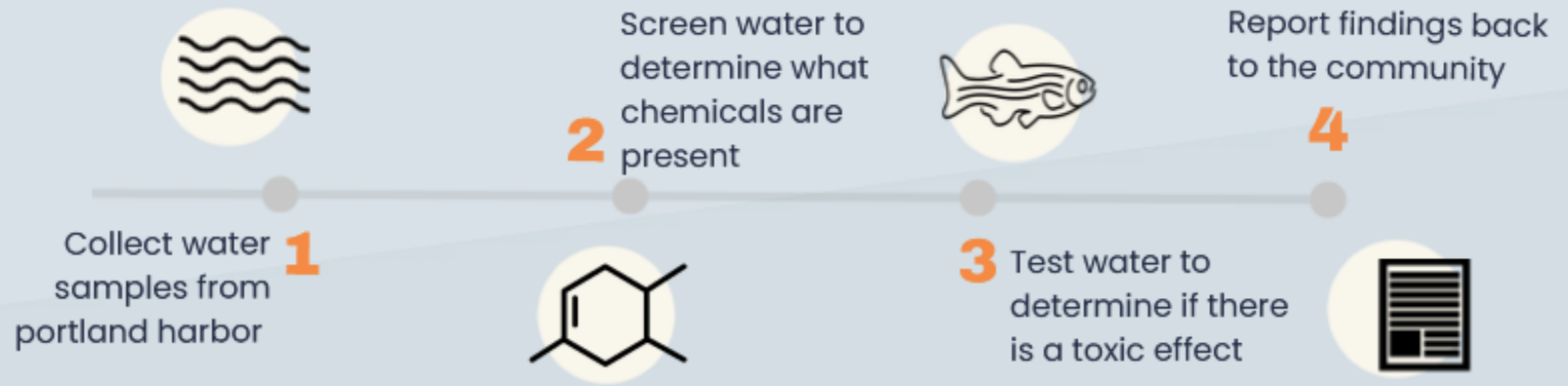
Portland Harbor Superfund Site Water Quality Screening Study



Study Purpose

The Portland Harbor Community Coalition has partnered with researchers at Oregon State University to do a small study across 6-7 locations to look at water quality in Portland Harbor. The study will conduct what is called non-targeted analysis, allowing the team to look for chemicals that are not typically assessed during standard water quality tests.

Project Goals



Principal Investigator: Dr. Manuel Garcia-Jaramillo (OSU)

Questions?

Discussion

- What types of environmental health concerns come up in the communities you work with?
- What types of environmental health resources and expertise do you think could be helpful in your community?



PACIFIC NORTHWEST CENTER

— *for* —

**Translational Environmental
Health Research**



Resources and Opportunities

OSU Extension:

- community 1-pager
- Request a consult, elevate a community priority
- https://oregonstate.qualtrics.com/jfe/form/SV_2sotcvgtPx2Y3YO



OSU Extension Staff

We are seeking your advice!

- Inviting Extension staff to a 90-minute small group discussion

https://oregonstate.qualtrics.com/jfe/form/SV_bINBMhukW2pIHgG

More on next slide

Please join the CEC for a “Community Conversation”



OSU Extension Staff

We are seeking your advice!



- A structured approach to gather input from potential stakeholders, based on Vanderbilt’s Community Engagement Studio (CES) model.
- 90 minute interactive discussion developed to integrate stakeholder voice into tools, resources and strategies.
- Our “Community Experts” are OSU Extension staff (8-10 per session)

Are you interested in joining the Community Conversation for OSU Extension?

https://oregonstate.qualtrics.com/jfe/form/SV_bINBMhukW2pIHgG

Topic: your interests and preferences on how to collaborate with others on research, share resources and build connections to environmental health expertise. The tool we are working on is the Discovery Index, an interactive database that would include and connect environmental health stakeholders.





Contact Us

Kim Brown, CEC Program Manager

kim.brown@oregonstate.edu

ehsc@oregonstate.edu

Request information or a consult:

https://oregonstate.qualtrics.com/jfe/form/SV_2sotcvgtPx2Y3YO